

Key Signature

(Sharp #)

Look at the score of **Laughing Song** on page 68.

Recall key signature on page 65.

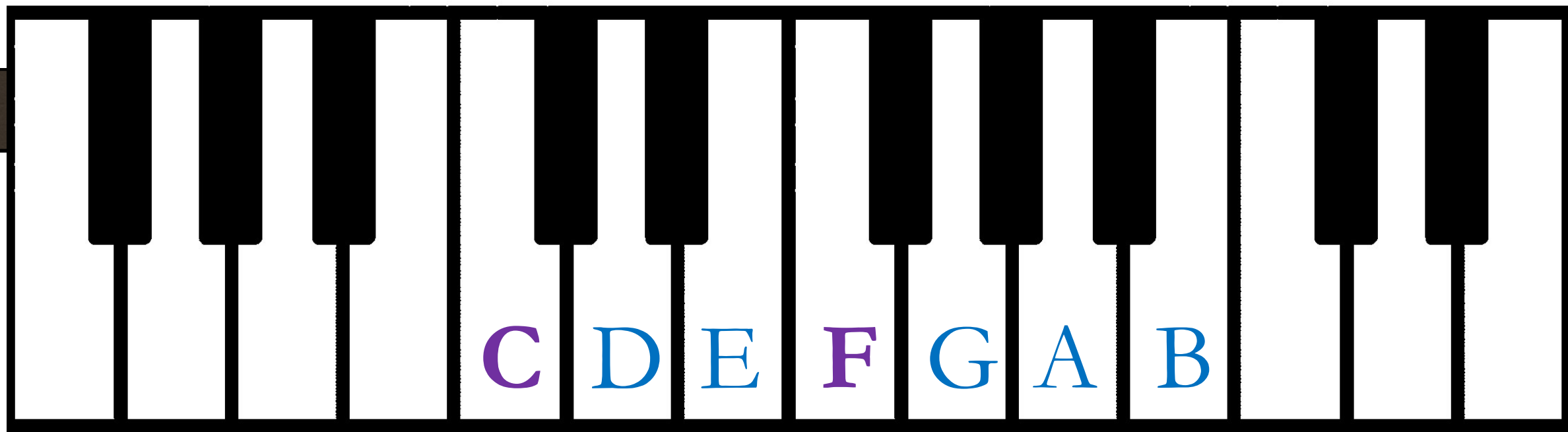
The sign # at the beginning of each line is also a key signature. There are two types of key signatures found in music scores. This sign # is called a **sharp**.

In this score, # is on the F line and that means all the 'F' notes are raised by one semitone and the key of the music is G major.

Recall time signature. In the score of **Laughing Song**, the time signature is $\frac{4}{4}$. The top number tells you there are four beats in a bar and the lower number means the beats are crotchet beats.



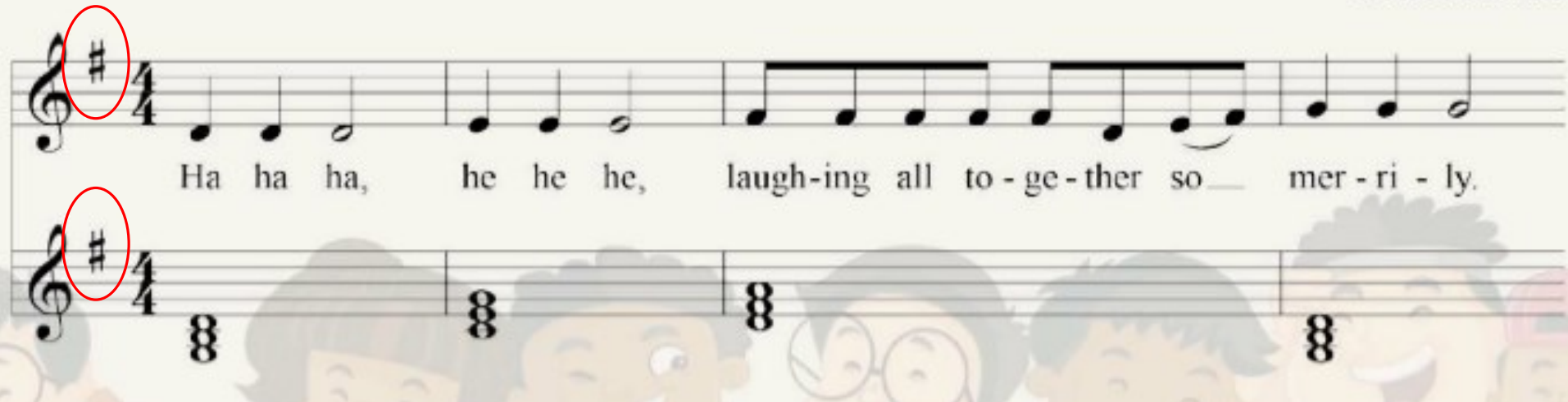
Find the F#, G# and A# in the melodica.



Laughing Song

TB P.68

Traditional



What is the position is the #?

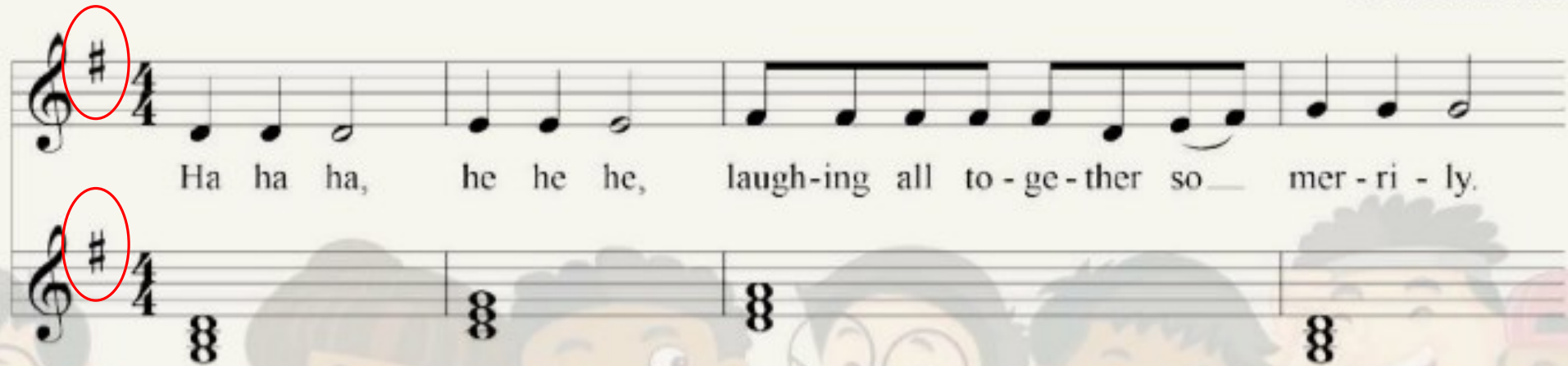


Eddie's **G**reen **B**oot's **D**on't **F**it

Laughing Song

TB P.68

Traditional



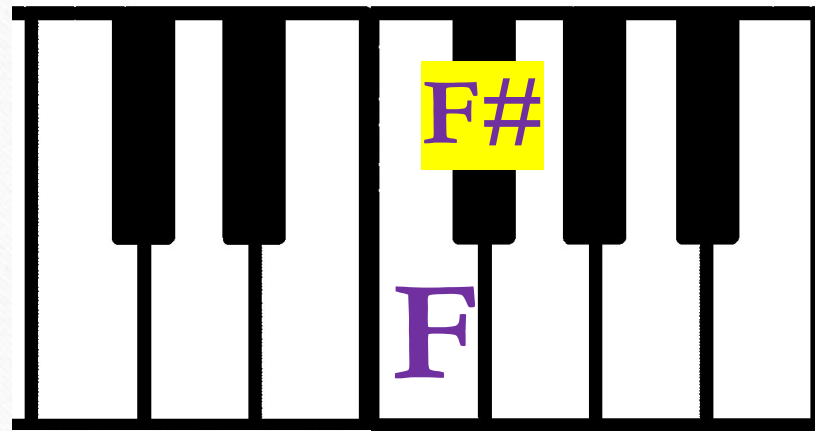
What is the position is the #?

F#

Pair in groups.
Explore the black keys on the piano.

- Task 1: Listen to the sound of 'F' note and 'F#'.

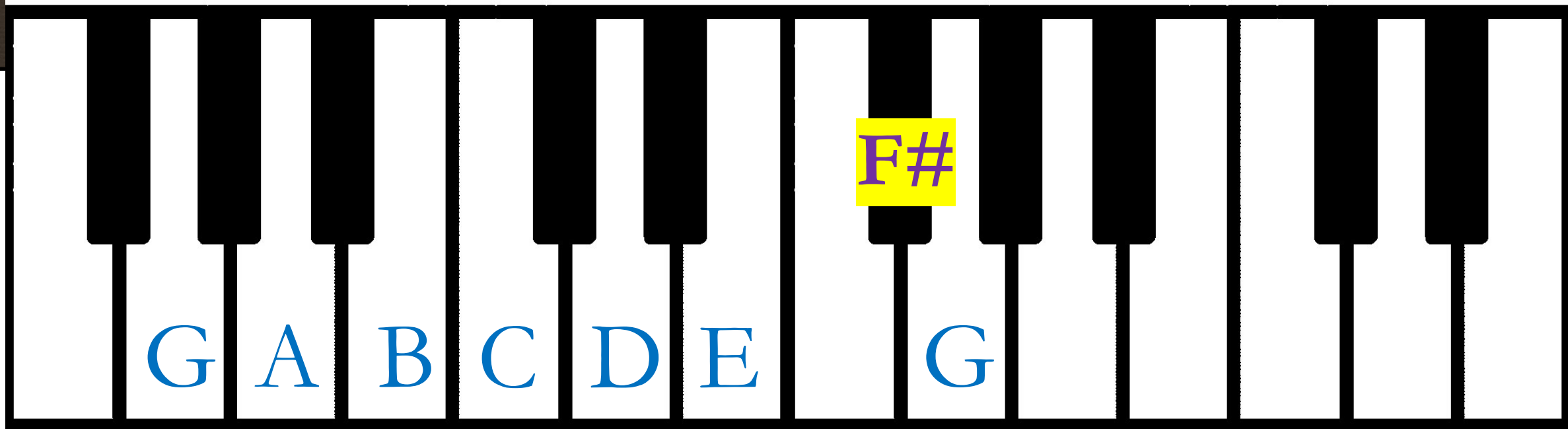
Which sound has a higher pitch?



Pair in groups.

Explore the black keys on the piano.

- Task 2: Try to play the G major scale on the piano.



*Task 3: Try to play *Laughing Song* on the piano.

Laughing Song

D ● ● E ● ● F# ● ● ● ● D E F# G *Traditional* ● ●

The image shows a musical score for the 'Laughing Song' in 4/4 time, key of D major. The melody is written on a treble clef staff with a key signature of one sharp (F#). The lyrics are: 'Ha ha ha, he he he, laugh-ing all to - ge - ther so — mer - ri - ly.' The melody consists of eighth and quarter notes. Above the staff, the notes are represented by letters and dots: D (blue), D (blue), E (blue), E (blue), F# (purple on a yellow background), F# (blue), F# (blue), F# (blue), D (blue), E (blue), F# (purple on a yellow background), G (blue), and two more blue dots. Below the staff, there are two more staves, both in 4/4 time, showing chords represented by groups of three eighth notes. The background features a faint illustration of a group of diverse children's faces.

<https://www.onlinepianist.com/virtual-piano>

← × 🏠 https://www.onlinepianist.com/virtual-piano#google_vignette

🔊 ☆ ⚙️ 👤 ... 🌈

 **ONLINE PIANIST**



Virtual Piano Keyboard

[Remove Ads](#) - Upgrade to our ad-free subscription



Real Keys



Sustain



Letter Notes



Metronome



Zoom Out



Full Screen

Al-Hussainy on 30 Year Bond Selloff, Fixed Income Strategy



Summary

- The sign # called sharp
- In the score, # is on the F line means all 'F' noted are (raised / lowered) by one semitone.
- When there is one F# in the music score, the key is G major.